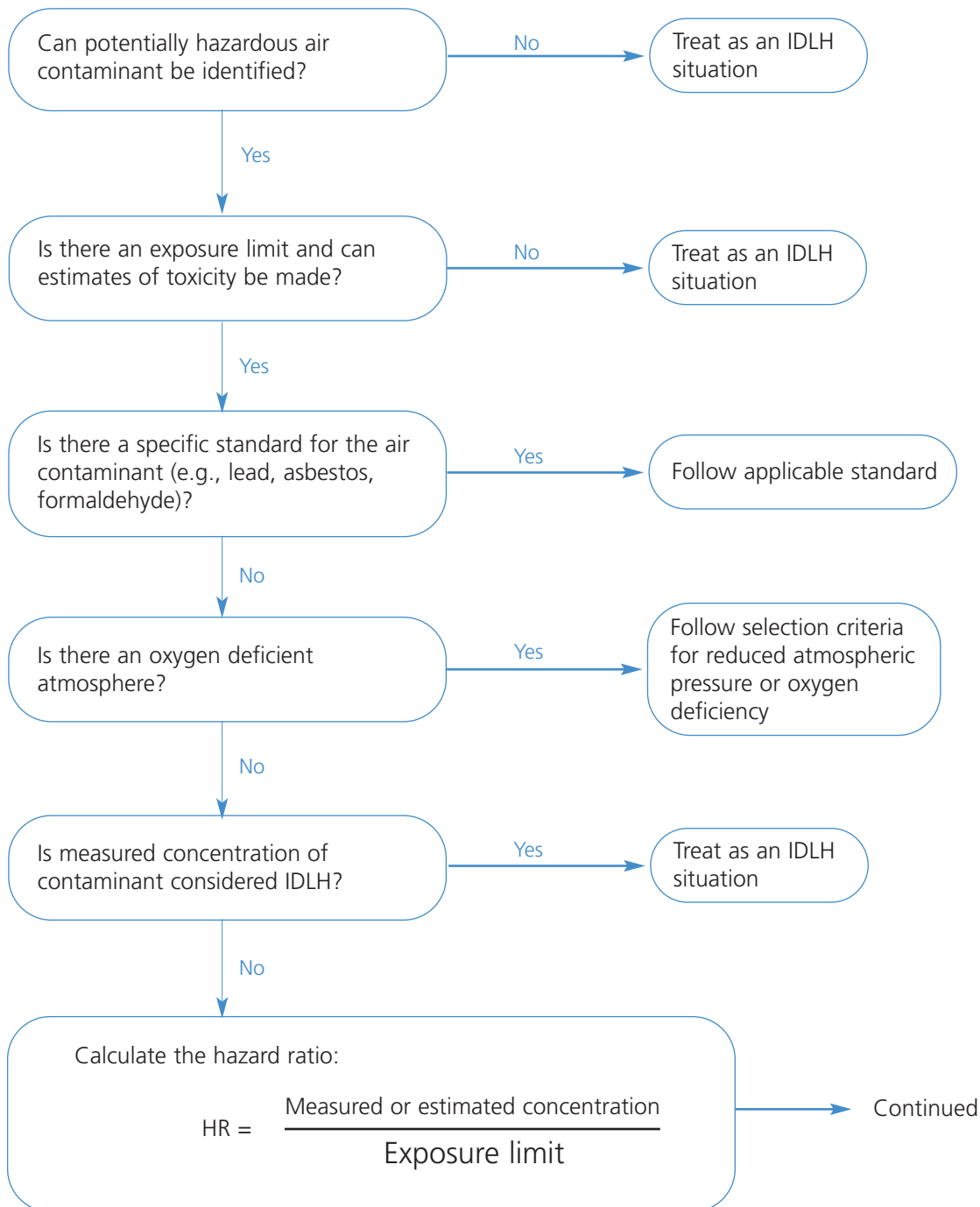


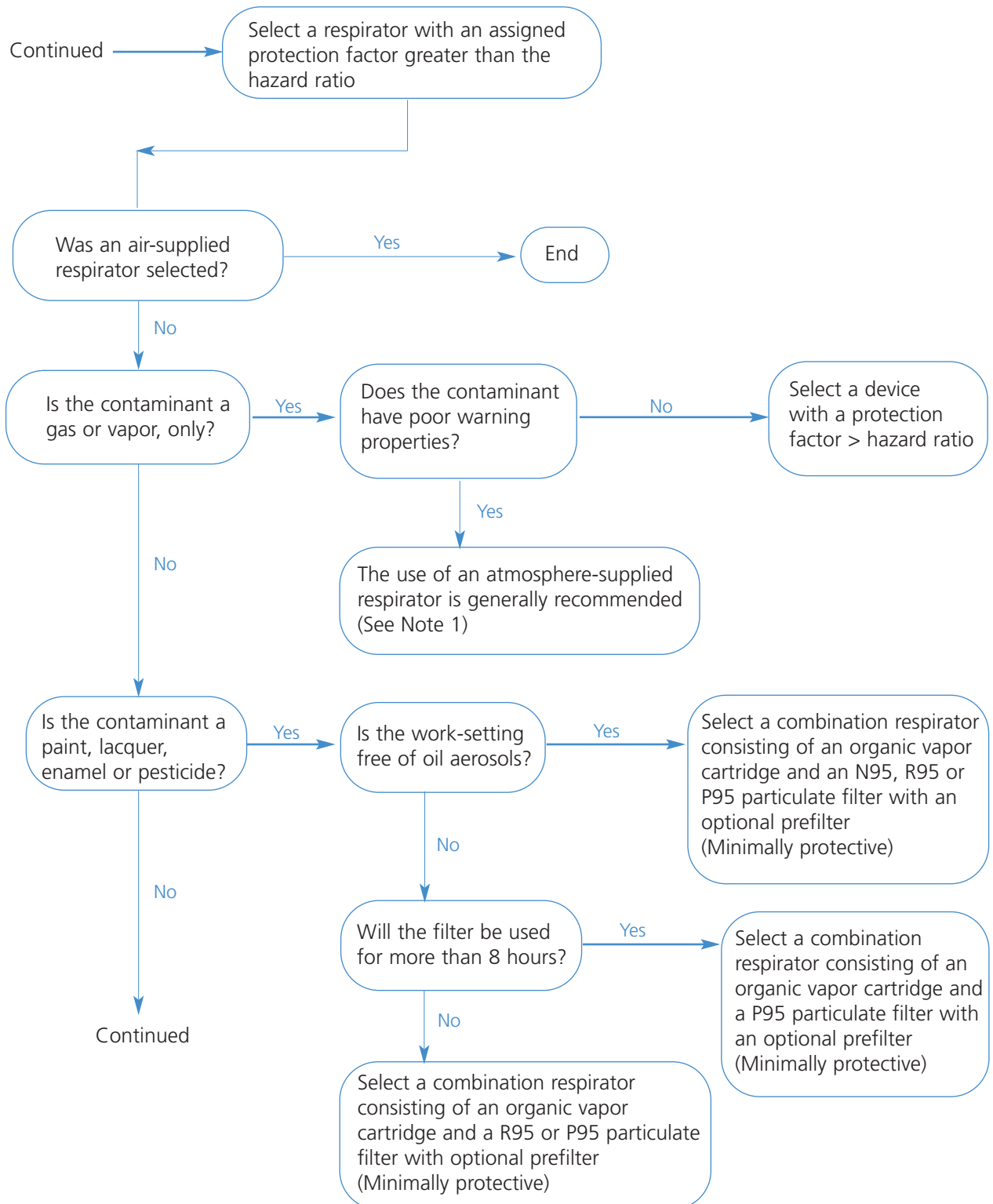
## Respirator selection flowchart

Figure 2



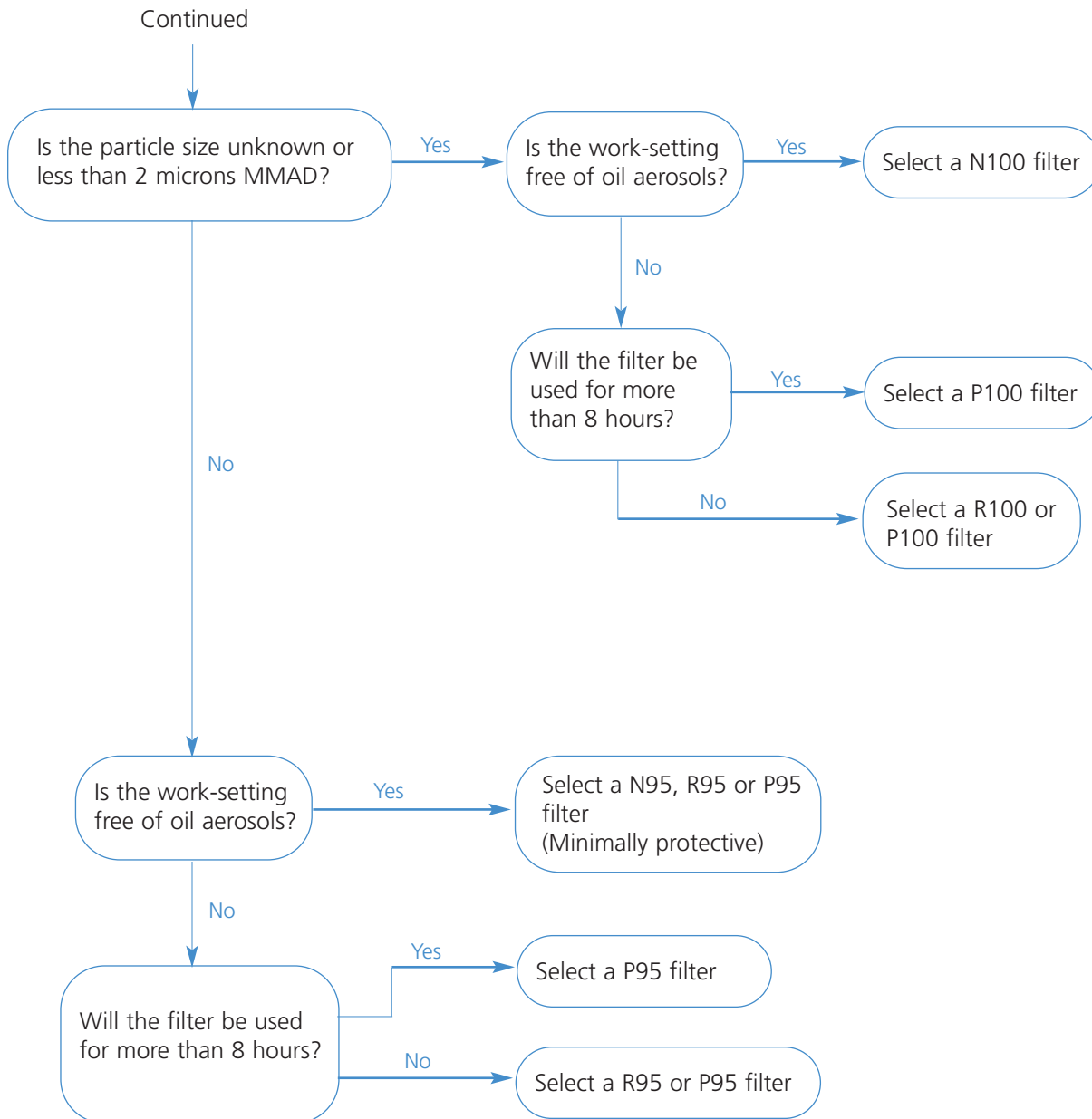
## Respirator selection flowchart

Figure 2 (cont.)



## Respirator selection flowchart

Figure 2 (cont.)



Note 1: Air purifying respirators should only be used if: (1) the air-purifying respirator has a reliable end-of-service-life indicator that will warn the user prior to contaminant breakthrough, or (2) a cartridge change schedule is implemented based on cartridge service data including desorption studies (unless cartridges are changed daily), expected concentration, pattern of use, and duration of exposure have been established, and the chemical does not have a ceiling limit.